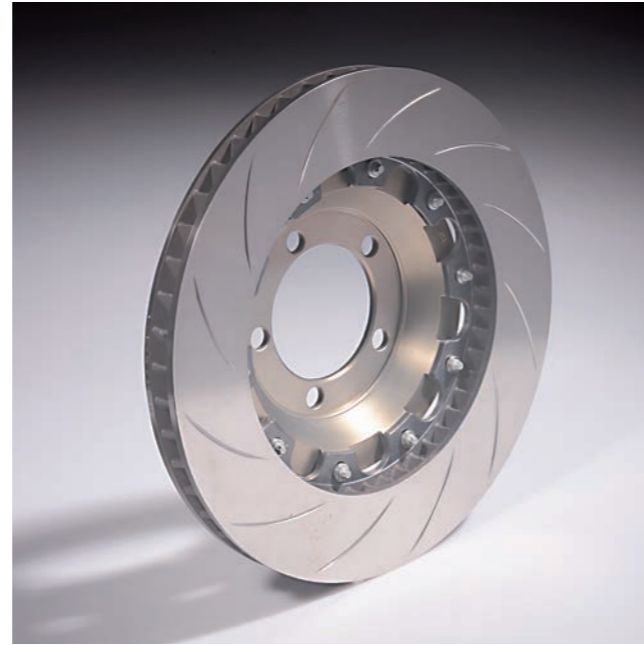




**DESIGN FEATURES**

- The floating connection is between the bobbin and disc thus minimizing wear on the hat
- Hard anodized aluminium hats for increased surface hardness and wear resistance
- Hard anodized and minimal wear extends the usable life of the hat
- Careful attention has been paid to the airflow into the ventilation chamber and onto the outside friction face through then openings in the connection flange to the disc
- The ventilation chamber is specially designed to improve heat transfer from the disc to the cooling airflow
- The surface finish (groove pattern) has been developed in combination with PAGID RACING brake pads for optimal system performance and wear characteristics.



**PAGID RBD - racing brake disc**

High performance racing brake disc, two versions optimized for weight, cooling performance and crack resistance for either sprint or long endurance races.

The modular design allows the use of either the lightweight version (for sprint races or rally), or the endurance version with the same hat (bell) for specific vehicle applications.



bt Bremsen Technik GmbH  
 Max-Planck-Straße 26 · 61381 Friedrichsdorf/Germany  
 www.pagidracing.com · info@bremsentechnik.de  
 +49 6172 59 76 60

bt Brake Technology of America  
 +1 239 540 1729  
 pagid@braketechnology.com

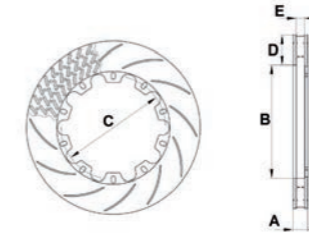


**HIGH PERFORMANCE  
 RACING BRAKE DISC**

# ASSEMBLY

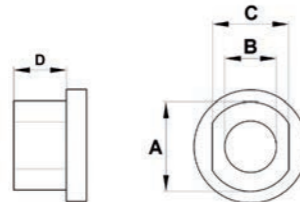
Vehicle Manufacturer	Vehicle Type	Race Application	Axle	Side	Outside Diameter	Thick-ness	Part Number Brake Disc	Part Number Mounting Bell	Part Number Bobbin Set	Part Number Assembly
Porsche	997 GT3 Cup	Endurance	Front	Left	380	32	ED380320501	EB380100101	SA100100101	SD380320301
				Right	380	32	ED380320601			SD380320401
			Rear	Left	350	28	ED350280501	EB350120101	SA100120101	SD350280301
				Right	350	28	ED350280601			SD350280401
Porsche	997 GT3 Cup	Sprint	Front	Left	380	32	ED380320101	EB380100101	SA100100101	SD380320101
				Right	380	32	ED380320201			SD380320201
			Rear	Left	350	28	ED350280301	EB350120101	SA100120101	SD350280101
				Right	350	28	ED350280401			SD350280201
Porsche	991 Carrera 3.4 Ceramic caliper	Endurance	Front	Left	350	34	ED350340301	EB350120201	SA100120101	SD350340101
				Right	350	34	ED350340401			SD350340201
			Rear	Left	350	28	ED350280501	EB350120301	SA100120101	SD350280501
				Right	350	28	ED350280601			SD350280601
Porsche	991 Carrera 3.4 Ceramic caliper	Sprint	Front	Left	350	34	ED350340101	EB350120201	SA100120101	SD350340301
				Right	350	34	ED350340201			SD350340401
			Rear	Left	350	28	ED350280301	EB350120301	SA100120101	SD350280701
				Right	350	28	ED350280401			SD350280801
Porsche	981 Cayman Ceramic caliper	Endurance	Front	Left	350	34	ED350340301	EB350120201	SA100120101	SD350340101
				Right	350	34	ED350340401			SD350340201
			Rear	Left	350	28	ED350280501	EB350120401	SA100120101	SD350280901
				Right	350	28	ED350280601			SD350281001
Porsche	981 Cayman Ceramic caliper	Sprint	Front	Left	350	34	ED350340101	EB350120201	SA100120101	SD350340301
				Right	350	34	ED350340201			SD350340401
			Rear	Left	350	28	ED350280301	EB350120401	SA100120101	SD350281101
				Right	350	28	ED350280401			SD350281201

## VENTILATED BRAKE DISCS



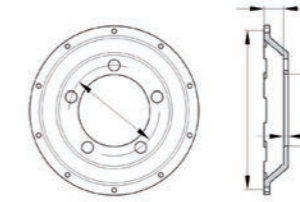
Outside Diameter	A: Thickness	B: Inside Diameter	C: Hat interface PCD	Mounting Side	According Bobbin Set	D: Max. Pad Depth	E: Vent Opening	Weight Kg.	Part Number
350	28	226	12 x 208	Left	SA100120101	60	15	6,2	ED350280501
				Right					ED350280601
350	28	226	12 x 208	Left	SA100120101	60	17	5,2	ED350280301
				Right					ED350280401
350	32	226	12 x 208	Left	SA100120101	60	17	6,9	ED350320101
				Right					ED350320201
350	34	226	12 x 208	Left	SA100120101	60	15	8,2	ED350340301
				Right					ED350340401
350	34	226	12 x 208	Left	SA100120101	60	17	7,5	ED350340101
				Right					ED350340201
380	32	250	10 x 228,6	Left	SA100100101	65	15	9,2	ED380320501
				Right					ED380320601
380	32	250	10 x 228,6	Left	SA100100101	65	17	8,1	ED380320101
				Right					ED380320201
380	35	250	10 x 228,6	Left	SA100100101	65	17	9,6	ED380350101
				Right					ED380350201

## BOBBIN SET



Quantity	A	B	C	D	Brake Disc Flange Thickness	Part Number
10	11	6.4	9.45	6.55	6.25	SA100100101
12	10	6.4	9.45	6.55	6.25	SA100120101

## MOUNTING BELL



Vehicle Manufacturer	Vehicle Type	Axle	A: Disc interface PCD	B: Stud Bolt Circle	C: Center Hole Dia.	D: Offset	E: Face Thickness	Part Number
Porsche	997 GT3 Cup	Front	10 x 228,6	5 x 130	103	28	6,5	EB380100101
		Rear	12 x 208	5 x 130	103	38,8	6,5	EB350120101
Porsche	991 Carrera 3.4 Ceramic caliper	Front	12 x 208	5 x 130	98	30,8	6,5	EB350120201
		Rear	12 x 208	5 x 130	98	38,9	6,5	EB350120301
Porsche	981 Cayman Ceramic caliper	Front	12 x 208	5 x 130	98	30,8	6,5	EB350120201
		Rear	12 x 208	5 x 130	98	30,9	6,5	EB350120401